

# Weld End Gas Valve

## Specifications and Dimensions

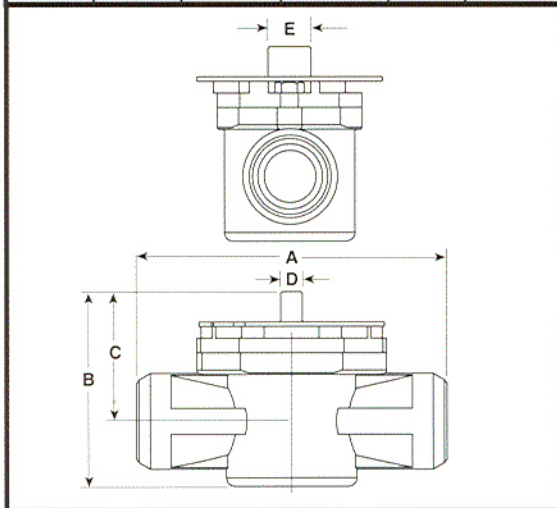
The extended view of the Style 350 "ULTRASEAL" Flanged end valve below indicates the relative position of operating parts with the valve in the closed position.

### PART NUMBERS

| Size | Basic Valve   | With Lock Plate | With Lock Plate & 2" Operating Nut |
|------|---------------|-----------------|------------------------------------|
| 2"   | 0350-3200-001 | 0350-3200-003   | 0350-3200-004                      |
| 3"   | 0350-3300-001 | 0350-3300-003   | 0350-3300-004                      |
| 4"   | 0350-3400-001 | 0350-3400-003   | 0350-3400-004                      |

### DIMENSIONS

| Size | A       | B       | C        | D    | E      |
|------|---------|---------|----------|------|--------|
| 2"   | 8-1/2"  | 5-9/16" | 3-11/16" | 5/8" | 1-1/4" |
| 3"   | 11-1/8" | 8"      | 5-3/8"   | 3/4" | 1-1/2" |
| 4"   | 12"     | 9-5/8"  | 6"       | 1"   | 2"     |



### Materials of Construction

**Body & Top Plate:** Steel, ASTM A 216 GR WCB (Weld Ends -ASME B31.8) Pressure Rating to 275 PSIG @ 150 F.

**Plug:** Ductile Iron, ASTM A 536 GR 65-45-12

**"O" Ring Seals:** SBR - Especially compounded for long life in natural gas service.

**Metallic Atmospheric Seal:** 18-8 Stainless Steel

**Springs:** Stainless Spring Steel

**Cap Screws:** Steel, ASTM A193 Grade B5

**Torque Ring:** Polyurethane

**Port Seals:** SBR Rubber Molded over High Tensile Strength Steel

**Weather Seal:** Chloroprene Rubber

**Lock Plate:** Carbon Steel

**Name Plate:** Stainless Steel - Rivited on body with alloy rivets

